

The Coach House

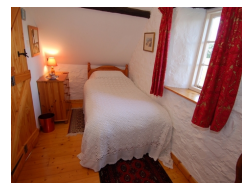


Contact Details:

Daytime Phone: 01244 356890

Lifton
PL16 0EP
England

£ 341.00 - £ 964.00 per week



This traditional coach house has access to an extensive garden and sleeps up to three people in two bedrooms

Facilities:

- **Entertainment:**
TV
- **Kitchen:**
Cooker, Fridge
- **Laundry:**
Washing Machine
- **Outside Area:**
Enclosed Garden
- **Price Included:**
Linen, Towels

Room Details:

Sleeps: 3

2 Bedrooms

1 Bathroom

About Lifton and the area

Lifton is a small village in the upper Tamar Valley, close to Launceston and the passing A30 road into Cornwall. This pretty community, once sitting astride the old A30 London to Penzance trunk road, is blessed with a village shop and post office, a superb pub and 3 top quality restaurants. At the far end of the village is an award winning farm shop/pick-your-own complex with a good bakery and on-site restaurant. Well placed for visiting anywhere in the South West, Dartmoor is 20 minutes away by car, Bodmin Moor is also 30 minutes and all of the major beaches and Cornish holiday attractions can be reached in under 45 minutes.

Recommended Attractions

1. Goodwood

Art Gallery, Historic Buildings and Monuments, Nature Reserve, Parks Gardens and Woodlands, Tours and Trips, Visitor Centres and Museums, Childrens Attractions, Zoos Farms and Wildlife Parks, Bistros and Brasseries, Cafes Coffee Shops and Tearooms, Horse Riding and Pony Trekking, Shooting and Fishing, Walking and Climbing



Motor circuit, Stately Home, Racecourse, Aerodrome, Forestry, Organic Farm Shop, Festival of Speed, Goodwood Revival

Chichester, PO18 0PX, West Sussex, England

2. Goodwood Races

Festivals and Events, Horse Racing



Under the family of the Duke of Richmond, Goodwood Races sits only five miles north of the town of Chichester.

Chichester, PO18 0PS, West Sussex, England

3. Arundel Castle and Gardens

Historic Buildings and Monuments, Parks Gardens and Woodlands



This converted Castle and Stately Home is over 1000 years old, and sits on the bank of the River Arun in West Sussex

Arundel, BN18 9AB, West Sussex, England

4. Chichester Cathedral

Historic Buildings and Monuments, Tours and Trips



This 900 Year Old Cathedral has been visited millions of times by people of all faiths and denominations.

Chichester, PO19 1PX, West Sussex, England

5. Petworth House

Historic Buildings and Monuments, Parks Gardens and Woodlands



Petworth House is a grade 1 listed building from the 17th Century. Set in an idyllic 700-acre Deer Park, it makes a great day out for viewing the historic building and walking in the verdant park surrounding it.

Petworth, GU28 0AE, West Sussex, England

6. Bucklers Hard

Visitor Centres and Museums, Childrens Attractions



Bucklers Hard is a 18th century maritime village which is situated on the Beaulieu River, it has a stunning Marina and plenty to see in the village.

Brockenhurst, SO42 7XB, Hampshire, England

7. Beaulieu Estate

Historic Buildings and Monuments, Visitor Centres and Museums, Childrens Attractions



Beaulieu is situated in the New Forest National Park, it is the perfect place for a fun day including museums, the historic abbey and the list goes on

Brockenhurst, SO42 7ZN, Hampshire, England

8. Paultons Park

Theme Parks



Paultons Family Theme Park is a great day out, there are a wide selection of rides allowing you to have the most fun and exciting day out.

The New Forest, SO51 6AL, Hampshire, England

9. The Milky Way Adventure Park

Visitor Centres and Museums, Childrens Attractions, Indoor and Outdoor Play Areas



North Devon's largest undercover family attraction.

Bideford, EX39 5RY, Devon, England

 **Highly Recommended by The Coach House!**

10. Tintagel and Tintagel Castle

Beaches, Historic Buildings and Monuments, Lochs Lakes and Waterfalls, Parks Gardens and Woodlands, Visitor Centres and Museums, Childrens Attractions, Cafes Coffee Shops and Tearooms, Pubs and Bars, Shops



Breathtaking ruined castle on the Cornish Coast - mythical home of King Arthur

Tintagel, PL34, Cornwall, England

 **Highly Recommended by The Coach House!**

11. Westward Ho! Beach

Beaches, Childrens Attractions

Over 2 miles of sandy beach in North Devon

Westward Ho, TQ1 , Devon, England



 **Highly Recommended by The Coach House!**

12. Lanhydrock

Historic Buildings and Monuments, Parks Gardens and Woodlands, Visitor Centres and Museums, Childrens Attractions, Indoor and Outdoor Play Areas, Cafes Coffee Shops and Tearooms, Restaurants

Magnificent late Victorian country house with extensive servants' quarters, gardens and wooded estate

Bodmin, PL30 5AD, Cornwall, England



 **Highly Recommended by The Coach House!**

13. Saunton Sands Beach

Beaches, Childrens Attractions, Sailing and Watersports

3 miles long sandy beach, ideal for families and popular with surfers

Saunton, EX33, Devon, England



 **Highly Recommended by The Coach House!**

14. Quince Honey Farm

Visitor Centres and Museums, Childrens Attractions, Zoos Farms and Wildlife Parks, Shops

World famous honey farm - the largest in the country

South Molton, EX36 3AZ, Devon, England



 **Highly Recommended by The Coach House!**

15. Horse riding holidays in North Devon Croyde

Childrens Attractions, Horse Riding and Pony Trekking



Roylands riding stables cater for all abilities and offer horse riding holidays.

Croyde, EX33, Devon, England

Highly Recommended by The Coach House!

16. h2outdoor Adventure Activities North Devon

Tours and Trips, Cycling and Mountain Bikes, Horse Riding and Pony Trekking, Sailing and Watersports, Walking and Climbing, Guided Walks, Guided Tours and Day Trips



A fantastic selection of adventure activities in North Devon. Sea kayaking, canoeing, surfing, coasteering, mountain biking, pony trekking & high ropes are just some of the activities we offer. Suitable for children, groups, stag/hen & corporate

Woolacombe, EX34 7BZ, Devon, England

Highly Recommended by The Coach House!

17. Babbacombe Model Village

Childrens Attractions



Thousands of miniature buildings, people and vehicles capture the essence of England's past, present and future

Babbacombe, TQ1 3LA, Devon, England

Highly Recommended by The Coach House!

18. Lost Gardens of Heligan

Parks Gardens and Woodlands



One of the most popular botanical gardens in the UK

St Austell, PL26 6EN, Cornwall, England

"A great day out for everyone. Highly recommended by us as a family. Plenty of space for kids to run around. Beautiful gardens and walks."

Highly Recommended by The Coach House!

19. Blackpool Sands Beach Devon

Beaches, Childrens Attractions, Cafes Coffee Shops and Tearooms, Shops, Sailing and Watersports



Award-winning family beach with turquoise blue sea giving it an almost Mediterranean feel.

Dartmouth, TQ6 0RG, Devon, England

Highly Recommended by The Coach House!

20. Lundy Island

Beaches, Tours and Trips, Childrens Attractions, Pubs and Bars, Walking and Climbing



Lundy Island and Nature Reserve

Bideford, EX39 2LY, Devon, England

Highly Recommended by The Coach House!

21. Slapton Sands and Torcross

Beaches, Childrens Attractions, Sailing and Watersports

Fantastic pebble beach in Devon

Slapton, TQ6, Devon, England



Highly Recommended by The Coach House!

22. Exmoor National Park

Parks Gardens and Woodlands, Horse Riding and Pony Trekking, Shooting and Fishing, Walking and Climbing



Beautiful national park spanning Somerset and Devon

Dulverton, TA22 9HL, Somerset, England

Highly Recommended by The Coach House!

23. Lynton and Barnstaple Railway

Tours and Trips, Cafes Coffee Shops and Tearooms, Railways



A restored narrow gauge steam railway in the Exmoor National Park area of North Devon. One mile of the original 19 miles has so far been re-opened.

Martinhoe Cross, Parracombe, EX31 4RA, Devon, England

Phone: 01598 763487

Highly Recommended by The Coach House!

24. Newquay Zoo

Zoos Farms and Wildlife Parks



One of the nations's best zoos, home of many of the world's endangered species.

Newquay, TR7 2LZ, Cornwall, England

Highly Recommended by The Coach House!

25. Fistral Beach

Beaches, Sailing and Watersports



World Famous surfing Beach in Newquay, Cornwall

Newquay, Cornwall, Cornwall, England

Highly Recommended by The Coach House!

26. Dunster Castle

Historic Buildings and Monuments, Parks Gardens and Woodlands



National Trust Property with subtropical terraced garden

Dunster, TA24 6SL, Somerset, England

Highly Recommended by The Coach House!

27. The Cross Keys Restaurant in Kippen

Pubs and Bars, Restaurants



Traditional and comfortable inn situated in the village of Kippen, Stirlingshire. We serve food all day from soups to sirloins, with home made pies and puddings to finish. Every Sunday is roast day featuring two types of roast. Children Welcome.

Kippen, FK8 3DN, Stirlingshire, Scotland

Phone: 01786 870293

Highly Recommended by The Coach House!

28. Gloagburn Farm Shop and Coffee Shop near Perth

Cafes Coffee Shops and Tearooms, Shops



The Gloagburn Farm Shop and Café are a local business of high quality offering local produce as well as a café.

Tibbermore, PH1 1QL, Perth and Kinross, Scotland

Highly Recommended by The Coach House!

29. The Black Watch Museum

Visitor Centres and Museums



Regimental Museum of the Proud and Illustrious Black Watch Regiment in Perth Scotland

Perth, PH1 5HR, Perth and Kinross, Scotland

 **Highly Recommended by The Coach House!**

30. Scone Palace

Historic Buildings and Monuments, Parks Gardens and Woodlands



Scone Palace occupies a unique position in Scottish History

Perth, PH2 6BD, Perth and Kinross, Scotland

 **Highly Recommended by The Coach House!**

31. Scone Palace

Historic Buildings and Monuments, Parks Gardens and Woodlands



Former crowning place of the Kings of Scotland, stunning setting in beautiful grounds. A stately home to visit.

Perth, PH2 6BD, Perth and Kinross, Scotland

 **Highly Recommended by The Coach House!**

32. The Scottish Crannog Centre

Historic Buildings and Monuments, Visitor Centres and Museums



Archaeological Open-Air Museum

Kenmore Aberfeldy, PH15 2HY, Perth and Kinross, Scotland

 **Highly Recommended by The Coach House!**

33. Glamis Castle

Historic Buildings and Monuments



Childhood home of Her Majesty Queen Elisabeth The Queen Mother

Glamis, DD8 1RJ, Angus and Dundee, Scotland

 **Highly Recommended by The Coach House!**

34. Enchanted Forest in Perthshire

Festivals and Events, Lochs Lakes and Waterfalls, Parks Gardens and Woodlands, Live Music and Comedy



The Enchanted Forest offers visitors a unique opportunity to experience the outdoors, at night and with spectacular imagery. You will experience a lighting show that is out of this world.

Pitlochry, PH16 5LA, Perth and Kinross, Scotland

 **Highly Recommended by The Coach House!**

35. Blair Castle

Historic Buildings and Monuments, Parks Gardens and Woodlands, Cafes Coffee Shops and Tearooms



Historic Castle

Blair Atholl, PH18 5TL, Perth and Kinross, Scotland

 **Highly Recommended by The Coach House!**

36. Balmoral Castle

Historic Buildings and Monuments, Parks Gardens and Woodlands, Visitor Centres and Museums



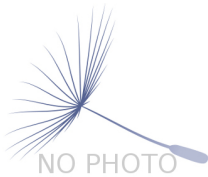
5 Star visitor attraction set amongst the magnificent scenery of Royal Deeside

Balmoral, AB35 5TB, Aberdeenshire, Scotland

 **Highly Recommended by The Coach House!**

37. Chateau de Hautefort

Historic Buildings and Monuments, Parks Gardens and Woodlands



Magnificent 17c Castle perched on a hill in a beautiful area of France.

Hautefort, 24390, Dordogne, France

"This chateau is off the hook."

 **Highly Recommended by The Coach House!**

38. Loch Venachar

Lochs Lakes and Waterfalls



Loch Venachar, The Trossachs

Callander, FK8 3EN, Stirlingshire,
Scotland

"There is a great walk down the southside of the Loch leading past the sailing club and if you branch right you can reach the Byre Inn."

By The Coach House

39. The Alpaca Park

Nature Reserve, Parks Gardens and Woodlands, Childrens Attractions, Zoos Farms and Wildlife Parks, Cafes Coffee Shops and Tearooms, Shops



A park with a collection of Alpacas, gardens, walks. Also horses, goats, ponies and wildlife. Tearoom with picnic areas. 5th Gold Award from Devon Wildlife Trust

Ashwater Beaworthy, EX21 5DL,
Devon, England

40. Canoe Tamar

Sailing and Watersports



Guided canoe trips for the family. Explore the beautiful river Tamar on the Devon Cornwall border.

nr Tavistock, pl198je, Devon, England

41. Tree Surfers

Childrens Attractions, Indoor and Outdoor Play Areas, Walking and Climbing



Tree Surfers is an adrenalin-pumping, heart-thumping bird's eye experience. Zip wires, tree jumps and tarzan swings 70ft high in the tree tops.

nr Tavistock, PL198JE, Devon, England

42. Buckland Abbey

Historic Buildings and Monuments, Visitor Centres and Museums, Childrens Attractions, Cafes Coffee Shops and Tearooms



700 year-old home of Sir Francis Drake run by the National Trust

Yelverton, PL20 6EY, Devon, England

43. Bodmin Moor

Walking and Climbing



A rugged and beautiful granite moorland in northeastern Cornwall

Bodmin, PL15 7xx, Cornwall, England

44. Dartmoor National Park

Parks Gardens and Woodlands, Cycling and Mountain Bikes, Horse Riding and Pony Trekking, Walking and Climbing



Rugged and beautiful moorland - area of outstanding natural beauty

Dartmoor, TQ13 9JQ, Devon, England

45. The Amazing Cornish Maize Maze

Indoor and Outdoor Play Areas



Situated on a working farm with a range of activities

Saltash, PL12 6RZ, Cornwall, England

46. Raven Surf School

Sailing and Watersports



One of the UK's premier surf schools. Learn to surf with former British, English and European surfing champion Mike Raven and his team of professional surf coaches.

Bude, EX23 8PD, Cornwall, England

47. food4myholiday.com

Individual, Shops



food delivery to holiday accommodation in Cornwall

Liskeard, PL14 3UT, Cornwall, England

48. 22 Mill Street

Restaurants



Restaurant just off Chagford high street with 2 AA rosettes

Chagford, TQ13 8 AW, Devon, England



More Information

For more information, you can find us under ref.nr. 88331 on LovetoEscape.com

LovetoEscape.com/holiday-cottages/88331/the-coach-house.htm