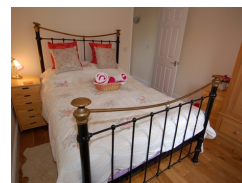


## Ash Cottage

**Contact Details:**

Daytime Phone: 01244 356890

Exeter  
EX6 7SN  
England

**£ 404.00 - £ 1,141.00 per week**

This sweet detached cottage is close to the historic cathedral town of Exeter and sleeps up to four people in two bedrooms.

**Facilities:**

- **Communications:**  
Broadband Internet
- **Entertainment:**  
TV
- **Kitchen:**  
Cooker, Fridge
- **Laundry:**  
Washing Machine

**Room Details:****Sleeps: 4****2 Bedrooms****1 Bathroom****About Exeter and the area**

Exeter is city in south Devon with a cathedral, historic quayside with artisan shops and cafés, guided tours of the underground passages and bars, shops and restaurants. There are museums tracing the city's history including 'The Tucker's Hall'. Nearby, Parliament Street is less than 25 inches wide. Rougemont castle's gatehouse and tower still stand, surrounded by gardens. Within a 15 minute drive of the city, there are beaches at Sidmouth and Exmouth, and the Jurassic Coast, all provide ample opportunities for relaxation, sport and exploration. Exeter is an ideal base from which to explore countryside and Heritage Coast.

## Recommended Attractions

### 1. Goodwood

*Art Gallery, Historic Buildings and Monuments, Nature Reserve, Parks Gardens and Woodlands, Tours and Trips, Visitor Centres and Museums, Childrens Attractions, Zoos Farms and Wildlife Parks, Bistros and Brasseries, Cafes Coffee Shops and Tearooms, Horse Riding and Pony Trekking, Shooting and Fishing, Walking and Climbing*



Motor circuit, Stately Home, Racecourse, Aerodrome, Forestry, Organic Farm Shop, Festival of Speed, Goodwood Revival

Chichester, PO18 0PX, West Sussex, England

### 2. Goodwood Races

*Festivals and Events, Horse Racing*



Under the family of the Duke of Richmond, Goodwood Races sits only five miles north of the town of Chichester.

Chichester, PO18 0PS, West Sussex, England

### 3. Arundel Castle and Gardens

*Historic Buildings and Monuments, Parks Gardens and Woodlands*



This converted Castle and Stately Home is over 1000 years old, and sits on the bank of the River Arun in West Sussex

Arundel, BN18 9AB, West Sussex, England

### 4. Chichester Cathedral

*Historic Buildings and Monuments, Tours and Trips*



This 900 Year Old Cathedral has been visited millions of times by people of all faiths and denominations.

Chichester, PO19 1PX, West Sussex, England

### 5. Petworth House

*Historic Buildings and Monuments, Parks Gardens and Woodlands*



Petworth House is a grade 1 listed building from the 17th Century. Set in an idyllic 700-acre Deer Park, it makes a great day out for viewing the historic building and walking in the verdant park surrounding it.

Petworth, GU28 0AE, West Sussex, England

## 6. Bucklers Hard

Visitor Centres and Museums, Childrens Attractions



Bucklers Hard is a 18th century maritime village which is situated on the Beaulieu River, it has a stunning Marina and plenty to see in the village.

Brockenhurst, SO42 7XB, Hampshire, England

## 7. Beaulieu Estate

Historic Buildings and Monuments, Visitor Centres and Museums, Childrens Attractions



Beaulieu is situated in the New Forest National Park, it is the perfect place for a fun day including museums, the historic abbey and the list goes on

Brockenhurst, SO42 7ZN, Hampshire, England

## 8. Paultons Park

Theme Parks



Paultons Family Theme Park is a great day out, there are a wide selection of rides allowing you to have the most fun and exciting day out.

The New Forest, SO51 6AL, Hampshire, England

## 9. Babbacombe Model Village

Childrens Attractions



Thousands of miniature buildings, people and vehicles capture the essence of England's past, present and future

Babbacombe, TQ1 3LA, Devon, England

 Highly Recommended by Ash Cottage!

## 10. Exmoor National Park

Parks Gardens and Woodlands, Horse Riding and Pony Trekking, Shooting and Fishing, Walking and Climbing



Beautiful national park spanning Somerset and Devon

Dulverton, TA22 9HL, Somerset, England

 Highly Recommended by Ash Cottage!

### 11. Quince Honey Farm

Visitor Centres and Museums, Childrens Attractions, Zoos Farms and Wildlife Parks, Shops



World famous honey farm - the largest in the country

South Molton, EX36 3AZ, Devon, England

 Highly Recommended by Ash Cottage!

---

### 12. Blackpool Sands Beach Devon

Beaches, Childrens Attractions, Cafes Coffee Shops and Tearooms, Shops, Sailing and Watersports



Award-winning family beach with turquoise blue sea giving it an almost Mediterranean feel.

Dartmouth, TQ6 0RG, Devon, England

 Highly Recommended by Ash Cottage!

---

### 13. Slapton Sands and Torcross

Beaches, Childrens Attractions, Sailing and Watersports



Fantastic pebble beach in Devon

Slapton, TQ6, Devon, England

 Highly Recommended by Ash Cottage!

---

### 14. Dunster Castle

Historic Buildings and Monuments, Parks Gardens and Woodlands



National Trust Property with subtropical terraced garden

Dunster, TA24 6SL, Somerset, England

 Highly Recommended by Ash Cottage!

---

### 15. Westward Ho! Beach

Beaches, Childrens Attractions



Over 2 miles of sandy beach in North Devon

Westward Ho, TQ1, Devon, England

 Highly Recommended by Ash Cottage!

### 16. Lynton and Barnstaple Railway

*Tours and Trips, Cafes Coffee Shops and Tearooms, Railways*



A restored narrow gauge steam railway in the Exmoor National Park area of North Devon. One mile of the original 19 miles has so far been re-opened.

Martinhoe Cross, Parracombe, EX31 4RA, Devon, England

**Phone:** 01598 763487

 Highly Recommended by Ash Cottage!

### 17. Saunton Sands Beach

*Beaches, Childrens Attractions, Sailing and Watersports*



3 miles long sandy beach, ideal for families and popular with surfers

Saunton, EX33, Devon, England

 Highly Recommended by Ash Cottage!

### 18. The Milky Way Adventure Park

*Visitor Centres and Museums, Childrens Attractions, Indoor and Outdoor Play Areas*



North Devon's largest undercover family attraction.

Bideford, EX39 5RY, Devon, England

 Highly Recommended by Ash Cottage!

### 19. Horse riding holidays in North Devon Croyde

*Childrens Attractions, Horse Riding and Pony Trekking*



Roylands riding stables cater for all abilities and offer horse riding holidays.

Croyde, EX33, Devon, England

 Highly Recommended by Ash Cottage!

### 20. h2outdoor Adventure Activities North Devon

*Tours and Trips, Cycling and Mountain Bikes, Horse Riding and Pony Trekking, Sailing and Watersports, Walking and Climbing, Guided Tours and Day Trips, Guided Walks*



A fantastic selection of adventure activities in North Devon. Sea kayaking, canoeing, surfing, coasteering, mountain biking, pony trekking & high ropes are just some of the activities we offer. Suitable for children, groups, stag/hen & corporate

Woolacombe, EX34 7BZ, Devon, England

 **Highly Recommended by Ash Cottage!**

---

## 21. Tintagel and Tintagel Castle

*Beaches, Historic Buildings and Monuments, Lochs Lakes and Waterfalls, Parks Gardens and Woodlands, Visitor Centres and Museums, Childrens Attractions, Cafes Coffee Shops and Tearooms, Pubs and Bars, Shops*



Breathtaking ruined castle on the Cornish Coast - mythical home of King Arthur

Tintagel, PL34, Cornwall, England

 **Highly Recommended by Ash Cottage!**

---

## 22. Lanhydrock

*Historic Buildings and Monuments, Parks Gardens and Woodlands, Visitor Centres and Museums, Childrens Attractions, Indoor and Outdoor Play Areas, Cafes Coffee Shops and Tearooms, Restaurants*



Magnificent late Victorian country house with extensive servants' quarters, gardens and wooded estate

Bodmin, PL30 5AD, Cornwall, England

 **Highly Recommended by Ash Cottage!**

---

## 23. Lundy Island

*Beaches, Tours and Trips, Childrens Attractions, Pubs and Bars, Walking and Climbing*



Lundy Island and Nature Reserve

Bideford, EX39 2LY, Devon, England

 **Highly Recommended by Ash Cottage!**

---

## 24. Lost Gardens of Heligan

*Parks Gardens and Woodlands*



One of the most popular botanical gardens in the UK

St Austell, PL26 6EN, Cornwall, England

"A great day out for everyone. Highly recommended by us as a family. Plenty of space for kids to run around. Beautiful gardens and walks."

 **Highly Recommended by Ash Cottage!**

---

## 25. Newquay Zoo

Zoos Farms and Wildlife Parks



One of the nations's best zoos, home of many of the world's endangered species.

Newquay, TR7 2LZ, Cornwall, England

 **Highly Recommended by Ash Cottage!**

---

## 26. Fistral Beach

Beaches, Sailing and Watersports



World Famous surfing Beach in Newquay, Cornwall

Newquay, Cornwall, Cornwall, England

 **Highly Recommended by Ash Cottage!**

---

## 27. The Cross Keys Restaurant in Kippen

Pubs and Bars, Restaurants



Traditional and comfortable inn situated in the village of Kippen, Stirlingshire. We serve food all day from soups to sirloins, with home made pies and puddings to finish. Every Sunday is roast day featuring two types of roast. Children Welcome.

Kippen, FK8 3DN, Stirlingshire, Scotland

**Phone:** 01786 870293

 **Highly Recommended by Ash Cottage!**

---

## 28. Gloagburn Farm Shop and Coffee Shop near Perth

Cafes Coffee Shops and Tearooms, Shops



The Gloagburn Farm Shop and Café are a local business of high quality offering local produce as well as a café.

Tibbermore, PH1 1QL, Perth and Kinross, Scotland

 **Highly Recommended by Ash Cottage!**

---

### 29. The Black Watch Museum

*Visitor Centres and Museums*



Regimental Museum of the Proud and Illustrious Black Watch Regiment in Perth Scotland

Perth, PH1 5HR, Perth and Kinross, Scotland

 **Highly Recommended by Ash Cottage!**

---

### 30. Scone Palace

*Historic Buildings and Monuments, Parks Gardens and Woodlands*



Scone Palace occupies a unique position in Scottish History

Perth, PH2 6BD, Perth and Kinross, Scotland

 **Highly Recommended by Ash Cottage!**

---

### 31. Scone Palace

*Historic Buildings and Monuments, Parks Gardens and Woodlands*



Former crowning place of the Kings of Scotland, stunning setting in beautiful grounds. A stately home to visit.

Perth, PH2 6BD, Perth and Kinross, Scotland

 **Highly Recommended by Ash Cottage!**

---

### 32. The Scottish Crannog Centre

*Historic Buildings and Monuments, Visitor Centres and Museums*



Archaeological Open-Air Museum

Kenmore Aberfeldy, PH15 2HY, Perth and Kinross, Scotland

 **Highly Recommended by Ash Cottage!**

---

### 33. Glamis Castle

*Historic Buildings and Monuments*





Childhood home of Her Majesty Queen Elisabeth The Queen Mother

Glamis, DD8 1RJ, Angus and Dundee, Scotland

 **Highly Recommended by Ash Cottage!**

### 34. Enchanted Forest in Perthshire

*Festivals and Events, Lochs Lakes and Waterfalls, Parks Gardens and Woodlands, Live Music and Comedy*



The Enchanted Forest offers visitors a unique opportunity to experience the outdoors, at night and with spectacular imagery. You will experience a lighting show that is out of this world.

Pitlochry, PH16 5LA, Perth and Kinross, Scotland

 **Highly Recommended by Ash Cottage!**

### 35. Blair Castle

*Historic Buildings and Monuments, Parks Gardens and Woodlands, Cafes Coffee Shops and Tearooms*



Historic Castle

Blair Atholl, PH18 5TL, Perth and Kinross, Scotland

 **Highly Recommended by Ash Cottage!**

### 36. Chateau de Hautefort

*Historic Buildings and Monuments, Parks Gardens and Woodlands*



Magnificent 17c Castle perched on a hill in a beautiful area of France.

Hautefort, 24390, Dordogne, France

"This chateau is off the hook."

 **Highly Recommended by Ash Cottage!**

### 37. Balmoral Castle

*Historic Buildings and Monuments, Parks Gardens and Woodlands, Visitor Centres and Museums*



5 Star visitor attraction set amongst the magnificent scenery of Royal Deeside

Balmoral, AB35 5TB, Aberdeenshire, Scotland

 **Highly Recommended by Ash Cottage!**

**38. Loch Venachar***Lochs Lakes and Waterfalls*

Loch Venachar, The Trossachs

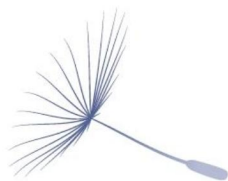
Callander, FK8 3EN, Stirlingshire,  
Scotland

*"There is a great walk down the southside of the Loch leading past the sailing club and if you branch right you can reach the Byre Inn."*

By Ash Cottage

**39. The Galley Topsham Fish and Seafood Restaurant***Restaurants*

Here at The Galley Topsham we want to impress you with the best of Devon on a plate. We are passionate about serving you the freshest fish and seafood, simply and stylishly presented, together with exciting meat and vegetarian options

The Galley Restaurant, TOPSHAM  
Exeter, EX3 0HU, Devon, England**Phone:** 01392 876078**40. The Galley Restaurant***Restaurants*

Fish restaurant - exotic and healthy, with an added touch of elegance

Topsham, EX3 0HU, Devon, England

**41. Castle Drogo**

*Historic Buildings and Monuments, Parks Gardens and Woodlands, Visitor Centres and Museums, Bistros and Brasseries, Cafes Coffee Shops and Tearooms*



The 'last castle to be built in England', set above the Teign Gorge with dramatic views over Dartmoor

Drewsteignton, EX6 6PB, Devon,  
England**42. Blacks Deli in Chagford***Cafes Coffee Shops and Tearooms, Shops*

Superb delicatessen in the centre of Chagford Devon serving locally produced food and drink. Ideally located for visitors to Dartmoor and throughout Devon.

Chagford, TQ13 8AB, Devon, England

**43. 22 Mill Street***Restaurants*

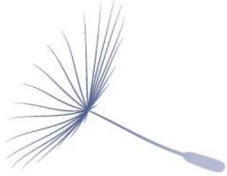


Restaurant just off Chagford high street with 2 AA rosettes

Chagford, TQ13 8 AW, Devon, England

#### 44. World of Country Life

*Visitor Centres and Museums, Childrens Attractions, Indoor and Outdoor Play Areas, Zoos Farms and Wildlife Parks, Cafes Coffee Shops and Tearooms, Restaurants*



Devon's number 1 all weather family attraction

Exmouth, EX8 5BU, Devon, England

#### 45. Leisure East Devon Holiday Memberships

*Childrens Attractions, Fitness and Leisure Centres*



A week's Holiday Membership for a group to sports and leisure facilities across east Devon

Budleigh Salterton, EX9 7BY, Devon, England

#### 46. Tiverton Canal Co

*Guided Tours and Day Trips, Boat Trips*



Canal Park Tourist Attraction, The home to the last horse-drawn barge in mid Devon in the West Country.

Tiverton, EX16 4HX, Devon, England

#### 47. Tiverton Canal Co Devon

*Tours and Trips, Visitor Centres and Museums, Childrens Attractions, Cafes Coffee Shops and Tearooms, Sailing and Watersports, Guided Tours and Day Trips, Boat Trips*



Canal Park Tourist Attraction in Devon, with Horse-Drawn Barge Trips, Day Boat Hire, Rowing Boats, Canadian Canoe Hire, Canalside Cafe Bar, Shop & Visitor Centre.

Tiverton, EX16 4HX, Devon, England

#### 48. Dartmoor Ilima walks

*Tours and Trips, Zoos Farms and Wildlife Parks, Guided Tours and Day Trips, Guided Walks*



Guided picnic walks in the Dartmoor National Park. Let our llamas take the strain while you enjoy a leisurely walk enjoying the spectacular views

Newton Abbot, TQ13 7PJ, Devon, England



**More Information**

For more information, you can find us under ref.nr. 88180 on LovetoEscape.com

[LovetoEscape.com/holiday-cottages/88180/ash-cottage.htm](https://LovetoEscape.com/holiday-cottages/88180/ash-cottage.htm)