

The Nest

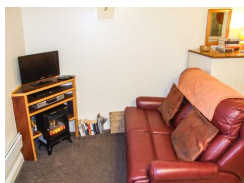


Contact Details:

Daytime Phone: 01244 356890

Buxton
Derbyshire
SK17 9SE
England

£ 327.00 - £ 883.00 per week



This studio apartment is on a working farm, close to the town of Buxton in the Peak District National Park and sleeps two people in one bedroom.

Facilities:

- **Communications:**
Broadband Internet
- **Entertainment:**
TV
- **Kitchen:**
Cooker, Fridge
- **Price Included:**
Linen, Towels
- **Special:**
Cots Available

Room Details:

Sleeps: 2

1 Bedroom
1 Bathroom

About Buxton and Derbyshire

Originally a Roman spa town, due to the constant 28°C of Buxton's eight thermal springs the town reached its peak in the 18th and 19th Centuries under the patronage of successive Dukes of Devonshire. The Palladian grandeur of today's town was designed and built by this family, including the magnificent semi-circular Crescent, The Great Stable, Hall Bank, The Square, The Pavilion Gardens and The Opera House. Visitors continue to enjoy these buildings and gardens, as well as a full programme of events at the Opera House, in addition to the annual Festival of Music and Arts. Close by, walkers and cyclists can enjoy numerous trails and paths, which lead into the stunning scenery around the town.

Recommended Attractions

1. Goodwood

Art Gallery, Historic Buildings and Monuments, Nature Reserve, Parks Gardens and Woodlands, Tours and Trips, Visitor Centres and Museums, Childrens Attractions, Zoos Farms and Wildlife Parks, Bistros and Brasseries, Cafes Coffee Shops and Tearooms, Horse Riding and Pony Trekking, Shooting and Fishing, Walking and Climbing



Motor circuit, Stately Home, Racecourse, Aerodrome, Forestry, Organic Farm Shop, Festival of Speed, Goodwood Revival

Chichester, PO18 0PX, West Sussex, England

2. Goodwood Races

Festivals and Events, Horse Racing



Under the family of the Duke of Richmond, Goodwood Races sits only five miles north of the town of Chichester.

Chichester, PO18 0PS, West Sussex, England

3. Arundel Castle and Gardens

Historic Buildings and Monuments, Parks Gardens and Woodlands



This converted Castle and Stately Home is over 1000 years old, and sits on the bank of the River Arun in West Sussex

Arundel, BN18 9AB, West Sussex, England

4. Chichester Cathedral

Historic Buildings and Monuments, Tours and Trips



This 900 Year Old Cathedral has been visited millions of times by people of all faiths and denominations.

Chichester, PO19 1PX, West Sussex, England

5. Petworth House

Historic Buildings and Monuments, Parks Gardens and Woodlands



Petworth House is a grade 1 listed building from the 17th Century. Set in an idyllic 700-acre Deer Park, it makes a great day out for viewing the historic building and walking in the verdant park surrounding it.

Petworth, GU28 0AE, West Sussex, England

6. Bucklers Hard

Visitor Centres and Museums, Childrens Attractions



Bucklers Hard is a 18th century maritime village which is situated on the Beaulieu River, it has a stunning Marina and plenty to see in the village.

Brockenhurst, SO42 7XB, Hampshire, England

7. Beaulieu Estate

Historic Buildings and Monuments, Visitor Centres and Museums, Childrens Attractions



Beaulieu is situated in the New Forest National Park, it is the perfect place for a fun day including museums, the historic abbey and the list goes on

Brockenhurst, SO42 7ZN, Hampshire, England

8. Paultons Park

Theme Parks



Paultons Family Theme Park is a great day out, there are a wide selection of rides allowing you to have the most fun and exciting day out.

The New Forest, SO51 6AL, Hampshire, England

9. Dunster Castle

Historic Buildings and Monuments, Parks Gardens and Woodlands



National Trust Property with subtropical terraced garden

Dunster, TA24 6SL, Somerset, England

 **Highly Recommended by The Nest!**

10. Lynton and Barnstaple Railway

Tours and Trips, Cafes Coffee Shops and Tearooms, Railways



A restored narrow gauge steam railway in the Exmoor National Park area of North Devon. One mile of the original 19 miles has so far been re-opened.

Martinhoe Cross, Parracombe, EX31 4RA, Devon, England

Phone: 01598 763487

 **Highly Recommended by The Nest!**

11. Exmoor National Park

Parks Gardens and Woodlands, Horse Riding and Pony Trekking, Shooting and Fishing, Walking and Climbing



Beautiful national park spanning Somerset and Devon

Dulverton, TA22 9HL, Somerset, England

 Highly Recommended by The Nest!

12. h2outdoor Adventure Activities North Devon

Tours and Trips, Cycling and Mountain Bikes, Horse Riding and Pony Trekking, Sailing and Watersports, Walking and Climbing, Guided Tours and Day Trips, Guided Walks



A fantastic selection of adventure activities in North Devon. Sea kayaking, canoeing, surfing, coasteering, mountain biking, pony trekking & high ropes are just some of the activities we offer. Suitable for children, groups, stag/hen & corporate

Woolacombe, EX34 7BZ, Devon, England

 Highly Recommended by The Nest!

13. Quince Honey Farm

Visitor Centres and Museums, Childrens Attractions, Zoos Farms and Wildlife Parks, Shops



World famous honey farm - the largest in the country

South Molton, EX36 3AZ, Devon, England

 Highly Recommended by The Nest!

14. Horse riding holidays in North Devon Croyde

Childrens Attractions, Horse Riding and Pony Trekking



Roylands riding stables cater for all abilities and offer horse riding holidays.

Croyde, EX33, Devon, England

 Highly Recommended by The Nest!

15. Saunton Sands Beach

Beaches, Childrens Attractions, Sailing and Watersports



3 miles long sandy beach, ideal for families and popular with surfers

Saunton, EX33, Devon, England

 Highly Recommended by The Nest!

16. Westward Ho! Beach

Beaches, Childrens Attractions

Over 2 miles of sandy beach in North Devon

Westward Ho, TQ1 , Devon, England



 **Highly Recommended by The Nest!**

17. Lundy Island

Beaches, Tours and Trips, Childrens Attractions, Pubs and Bars, Walking and Climbing

Lundy Island and Nature Reserve

Bideford, EX39 2LY, Devon, England



 **Highly Recommended by The Nest!**

18. The Milky Way Adventure Park

Visitor Centres and Museums, Childrens Attractions, Indoor and Outdoor Play Areas

North Devon's largest undercover family attraction.

Bideford, EX39 5RY, Devon, England



 **Highly Recommended by The Nest!**

19. Babbacombe Model Village

Childrens Attractions

Thousands of miniature buildings, people and vehicles capture the essence of England's past, present and future

Babbacombe, TQ1 3LA, Devon, England



 **Highly Recommended by The Nest!**

20. Blackpool Sands Beach Devon

Beaches, Childrens Attractions, Cafes Coffee Shops and Tearooms, Shops, Sailing and Watersports



Award-winning family beach with turquoise blue sea giving it an almost Mediterranean feel.

Dartmouth, TQ6 0RG, Devon, England

 Highly Recommended by The Nest!

21. Tintagel and Tintagel Castle

Beaches, Historic Buildings and Monuments, Lochs Lakes and Waterfalls, Parks Gardens and Woodlands, Visitor Centres and Museums, Childrens Attractions, Cafes Coffee Shops and Tearooms, Pubs and Bars, Shops



Breathtaking ruined castle on the Cornish Coast - mythical home of King Arthur

Tintagel, PL34, Cornwall, England

 Highly Recommended by The Nest!

22. Slapton Sands and Torcross

Beaches, Childrens Attractions, Sailing and Watersports



Fantastic pebble beach in Devon

Slapton, TQ6, Devon, England

 Highly Recommended by The Nest!

23. The Cross Keys Restaurant in Kippen

Pubs and Bars, Restaurants



Traditional and comfortable inn situated in the village of Kippen, Stirlingshire. We serve food all day from soups to sirloins, with home made pies and puddings to finish. Every Sunday is roast day featuring two types of roast. Children Welcome.

Kippen, FK8 3DN, Stirlingshire, Scotland

Phone: 01786 870293

 Highly Recommended by The Nest!

24. The Black Watch Museum

Visitor Centres and Museums



Regimental Museum of the Proud and Illustrious Black Watch Regiment in Perth Scotland

Perth, PH1 5HR, Perth and Kinross, Scotland

 Highly Recommended by The Nest!

25. Gloagburn Farm Shop and Coffee Shop near Perth

Cafes Coffee Shops and Tearooms, Shops



The Gloagburn Farm Shop and Café are a local business of high quality offering local produce as well as a café.

Tibbermore, PH1 1QL, Perth and Kinross, Scotland

Highly Recommended by The Nest!

26. Lanhydrock

Historic Buildings and Monuments, Parks Gardens and Woodlands, Visitor Centres and Museums, Childrens Attractions, Indoor and Outdoor Play Areas, Cafes Coffee Shops and Tearooms, Restaurants



Magnificent late Victorian country house with extensive servants' quarters, gardens and wooded estate

Bodmin, PL30 5AD, Cornwall, England

Highly Recommended by The Nest!

27. Scone Palace

Historic Buildings and Monuments, Parks Gardens and Woodlands



Scone Palace occupies a unique position in Scottish History

Perth, PH2 6BD, Perth and Kinross, Scotland

Highly Recommended by The Nest!

28. Scone Palace

Historic Buildings and Monuments, Parks Gardens and Woodlands



Former crowning place of the Kings of Scotland, stunning setting in beautiful grounds. A stately home to visit.

Perth, PH2 6BD, Perth and Kinross, Scotland

Highly Recommended by The Nest!

29. Glamis Castle

Historic Buildings and Monuments



Childhood home of Her Majesty Queen Elisabeth The Queen Mother

Glamis, DD8 1RJ, Angus and Dundee, Scotland

Highly Recommended by The Nest!

30. Newquay Zoo

Zoos Farms and Wildlife Parks



One of the nation's best zoos, home of many of the world's endangered species.

Newquay, TR7 2LZ, Cornwall, England

 Highly Recommended by The Nest!

31. Fistral Beach

Beaches, Sailing and Watersports



World Famous surfing Beach in Newquay, Cornwall

Newquay, Cornwall, Cornwall, England

 Highly Recommended by The Nest!

32. Lost Gardens of Heligan

Parks Gardens and Woodlands



One of the most popular botanical gardens in the UK

St Austell, PL26 6EN, Cornwall, England

"A great day out for everyone. Highly recommended by us as a family. Plenty of space for kids to run around. Beautiful gardens and walks."

 Highly Recommended by The Nest!

33. The Scottish Crannog Centre

Historic Buildings and Monuments, Visitor Centres and Museums



Archaeological Open-Air Museum

Kenmore Aberfeldy, PH15 2HY, Perth and Kinross, Scotland

 Highly Recommended by The Nest!

34. Enchanted Forest in Perthshire*Festivals and Events, Lochs Lakes and Waterfalls, Parks Gardens and Woodlands, Live Music and Comedy*

The Enchanted Forest offers visitors a unique opportunity to experience the outdoors, at night and with spectacular imagery. You will experience a lighting show that is out of this world.

Pitlochry, PH16 5LA, Perth and Kinross, Scotland

 **Highly Recommended by The Nest!**

35. Blair Castle*Historic Buildings and Monuments, Parks Gardens and Woodlands, Cafes Coffee Shops and Tearooms*

Historic Castle

Blair Atholl, PH18 5TL, Perth and Kinross, Scotland

 **Highly Recommended by The Nest!**

36. Balmoral Castle*Historic Buildings and Monuments, Parks Gardens and Woodlands, Visitor Centres and Museums*

5 Star visitor attraction set amongst the magnificent scenery of Royal Deeside

Balmoral, AB35 5TB, Aberdeenshire, Scotland

 **Highly Recommended by The Nest!**

37. Dunrobin Castle Golspie Sutherland*Historic Buildings and Monuments, Visitor Centres and Museums*

Seat of the Duke of Sutherland. Originally built in 1401 and rebuilt in 1835. Castle Tour and Falconry Displays a Must. Open between April and Oct

Golspie, KW10 6RS, The Highlands, Scotland

"Castle of fairy tales which looks dramatic from the sea. Falconry display and museum worth visiting too."

 **Highly Recommended by The Nest!**

38. Brora golf club*Golf*

Brora Golf Club, a traditional links course, designed by James Braid, where little has changed since he left in 1923.

Brora, KW9 6QS, The Highlands, Scotland

"Wonderful Braid course in top 100 best courses UK and Ireland."

 Highly Recommended by The Nest!

39. Loch Venachar

Lochs Lakes and Waterfalls



Loch Venachar, The Trossachs

Callander, FK8 3EN, Stirlingshire, Scotland

"There is a great walk down the southside of the Loch leading past the sailing club and if you branch right you can reach the Byre Inn."
By The Nest

40. Peak Practice Golf Driving Range

Golf



Floodlit golf driving range suitable for all the family whatever the weather

Buxton, SK17 7HW, Derbyshire, England

42. Hells Hall of Fame Halloween event

Tours and Trips, Childrens Attractions



An interactive ghost walk with live performances during the week of Halloween.

Buxton, SK17 6XN, Derbyshire, England

43. Visit Buxton Opera House

Live Entertainment, Live Music and Comedy, Theatres

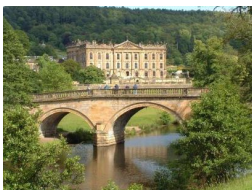


is a charming historic building in the heart of the Peak District, one of Britain's leading receiving theatres.

Buxton, SK17 6XN, Derbyshire, England

44. Chatsworth House

Historic Buildings and Monuments, Parks Gardens and Woodlands, Childrens Attractions, Zoos Farms and Wildlife Parks



Historic stately home

Bakewell, DE45 1PP, Derbyshire, England

45. World of James Herriot*Historic Buildings and Monuments, Tours and Trips, Visitor Centres and Museums*

Interactive museum experience featuring all things James Herriot - the famous vet and author of the 'All Creatures Great and Small' books.

Thirsk, YO7 1PL, North Yorkshire, England

46. The Blackpool Tower*Historic Buildings and Monuments, Visitor Centres and Museums, Childrens Attractions, Indoor and Outdoor Play Areas, Theme Parks, Zoos Farms and Wildlife Parks, Restaurants, Cinemas, Live Entertainment, Live Music and Comedy, Nightlife, Theatres*

The Blackpool Tower is one of the UK's most iconic attractions, including adored venues such as the Eye, the Dungeon, the Circus, Jungle Jim's and more.

Blackpool, FY1 4BJ, Lancashire, England

47. ALTON TOWERS*Childrens Attractions, Theme Parks*

A theme park and resort located in Staffordshire, England

Alton , ST10 4DB, Staffordshire, England

48. Crich Tramway Village*Tours and Trips, Visitor Centres and Museums, Childrens Attractions, Indoor and Outdoor Play Areas, Cafes Coffee Shops and Tearooms, Pubs and Bars, Restaurants, Shops, Guided Tours and Day Trips, Railways*

An open air museum of trams. Museum, exhibition hall, workshops, woodland park, indoor and outdoor play & picnic area. Shop, bar, restaurant and tearoom

Matlock, DE4 5DP, Derbyshire, England

**More Information**

For more information, you can find us under ref.nr. 83339 on LovetoEscape.com

LovetoEscape.com/holiday-cottages/83339/the-nest.htm