

## Nef-Stedi

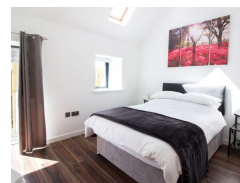
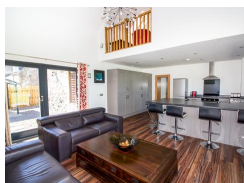


### Contact Details:

Daytime Phone: 01244 356890

Inverurie  
Aberdeenshire  
AB51 0LP  
Scotland

£ 759.00 - £ 2,367.00 per week



This well-appointed cottage is situated near the town of Inverurie near Aberdeen and can sleep six people in three bedrooms.

### Facilities:

- **COVID-19:**  
Advance booking essential, Capacity limit, COVID-19 measures in place, COVID-19 refund and cancellation policy in place, COVID-19 risk assessment completed, Deep cleaning between visitors
- **Communications:**  
Broadband Internet
- **Entertainment:**  
TV
- **Exercise:**  
Jacuzzi / Hot Tub
- **Kitchen:**  
Cooker, Dishwasher, Fridge
- **Laundry:**  
Washing Machine
- **Price Included:**  
Linen, Towels
- **Special:**  
Cots Available

### Room Details:

**Sleeps: 6**

**3 Double Rooms**

**2 Bathrooms**

## About Inverurie and Aberdeenshire

Inverurie is a charming village with a monthly farmers' market, also offering a great selection of shops, pubs and restaurants as well as an 18 hole golf course. The city of Aberdeen lies within easy reach and is a memorable day out for everybody with its notable buildings, beach and a links golf course. The Cairngorms National Park is also worth a visit, and ideal for outdoor enthusiasts. This is an ideal base for exploring Scotland's best features.

## Recommended Attractions

### 1. Goodwood

*Art Gallery, Historic Buildings and Monuments, Nature Reserve, Parks Gardens and Woodlands, Tours and Trips, Visitor Centres and Museums, Childrens Attractions, Zoos Farms and Wildlife Parks, Bistros and Brasseries, Cafes Coffee Shops and Tearooms, Horse Riding and Pony Trekking, Shooting and Fishing, Walking and Climbing*



Motor circuit, Stately Home, Racecourse, Aerodrome, Forestry, Organic Farm Shop, Festival of Speed, Goodwood Revival

Chichester, PO18 0PX, West Sussex, England

### 2. Goodwood Races

*Festivals and Events, Horse Racing*



Under the family of the Duke of Richmond, Goodwood Races sits only five miles north of the town of Chichester.

Chichester, PO18 0PS, West Sussex, England

### 3. Arundel Castle and Gardens

*Historic Buildings and Monuments, Parks Gardens and Woodlands*



This converted Castle and Stately Home is over 1000 years old, and sits on the bank of the River Arun in West Sussex

Arundel, BN18 9AB, West Sussex, England

### 4. Chichester Cathedral

*Historic Buildings and Monuments, Tours and Trips*



This 900 Year Old Cathedral has been visited millions of times by people of all faiths and denominations.

Chichester, PO19 1PX, West Sussex, England

### 5. Petworth House

*Historic Buildings and Monuments, Parks Gardens and Woodlands*



Petworth House is a grade 1 listed building from the 17th Century. Set in an idyllic 700-acre Deer Park, it makes a great day out for viewing the historic building and walking in the verdant park surrounding it.

Petworth, GU28 0AE, West Sussex, England

## 6. Bucklers Hard

Visitor Centres and Museums, Childrens Attractions



Bucklers Hard is a 18th century maritime village which is situated on the Beaulieu River, it has a stunning Marina and plenty to see in the village.

Brockenhurst, SO42 7XB, Hampshire, England

## 7. Beaulieu Estate

Historic Buildings and Monuments, Visitor Centres and Museums, Childrens Attractions



Beaulieu is situated in the New Forest National Park, it is the perfect place for a fun day including museums, the historic abbey and the list goes on

Brockenhurst, SO42 7ZN, Hampshire, England

## 8. Paultons Park

Theme Parks



Paultons Family Theme Park is a great day out, there are a wide selection of rides allowing you to have the most fun and exciting day out.

The New Forest, SO51 6AL, Hampshire, England

## 9. Balmoral Castle

Historic Buildings and Monuments, Parks Gardens and Woodlands, Visitor Centres and Museums



5 Star visitor attraction set amongst the magnificent scenery of Royal Deeside

Balmoral, AB35 5TB, Aberdeenshire, Scotland

 **Highly Recommended by Nef-Stedi!**

## 10. Glamis Castle

Historic Buildings and Monuments



Childhood home of Her Majesty Queen Elisabeth The Queen Mother

Glamis, DD8 1RJ, Angus and Dundee, Scotland

 **Highly Recommended by Nef-Stedi!**

## 11. Enchanted Forest in Perthshire

Festivals and Events, Lochs Lakes and Waterfalls, Parks Gardens and Woodlands, Live Music and Comedy



The Enchanted Forest offers visitors a unique opportunity to experience the outdoors, at night and with spectacular imagery. You will experience a lighting show that is out of this world.

Pitlochry, PH16 5LA, Perth and Kinross, Scotland

 Highly Recommended by Nef-Stedi!

## 12. Blair Castle

*Historic Buildings and Monuments, Parks Gardens and Woodlands, Cafes Coffee Shops and Tearooms*



Historic Castle

Blair Atholl, PH18 5TL, Perth and Kinross, Scotland

 Highly Recommended by Nef-Stedi!

## 13. Scone Palace

*Historic Buildings and Monuments, Parks Gardens and Woodlands*



Former crowning place of the Kings of Scotland, stunning setting in beautiful grounds. A stately home to visit.

Perth, PH2 6BD, Perth and Kinross, Scotland

 Highly Recommended by Nef-Stedi!

## 14. Scone Palace

*Historic Buildings and Monuments, Parks Gardens and Woodlands*



Scone Palace occupies a unique position in Scottish History

Perth, PH2 6BD, Perth and Kinross, Scotland

 Highly Recommended by Nef-Stedi!

## 15. The Black Watch Museum

*Visitor Centres and Museums*



Regimental Museum of the Proud and Illustrious Black Watch Regiment in Perth Scotland

Perth, PH1 5HR, Perth and Kinross, Scotland

 Highly Recommended by Nef-Stedi!

## 16. Brora golf club

*Golf*



Brora Golf Club, a traditional links course, designed by James Braid, where little has changed since he left in 1923.

Brora, KW9 6QS, The Highlands, Scotland

"Wonderful Braid course in top 100 best courses UK and Ireland."

Highly Recommended by Nef-Stedi!

### 17. Gloagburn Farm Shop and Coffee Shop near Perth

Cafes Coffee Shops and Tearooms, Shops



The Gloagburn Farm Shop and Café are a local business of high quality offering local produce as well as a café.

Tibbermore, PH1 1QL, Perth and Kinross, Scotland

Highly Recommended by Nef-Stedi!

### 18. Dunrobin Castle Golspie Sutherland

Historic Buildings and Monuments, Visitor Centres and Museums



Seat of the Duke of Sutherland. Originally built in 1401 and rebuilt in 1835. Castle Tour and Falconry Displays a Must. Open between April and Oct

Golspie, KW10 6RS, The Highlands, Scotland

"Castle of fairy tales which looks dramatic from the sea. Falconry display and museum worth visiting too."

Highly Recommended by Nef-Stedi!

### 19. The Scottish Crannog Centre

Historic Buildings and Monuments, Visitor Centres and Museums



Archaeological Open-Air Museum

Kenmore Aberfeldy, PH15 2HY, Perth and Kinross, Scotland

Highly Recommended by Nef-Stedi!

### 20. The Cross Keys Restaurant in Kippen

Pubs and Bars, Restaurants



Traditional and comfortable inn situated in the village of Kippen, Stirlingshire. We serve food all day from soups to sirloins, with home made pies and puddings to finish. Every Sunday is roast day featuring two types of roast. Children Welcome.

Kippen, FK8 3DN, Stirlingshire, Scotland

**Phone:** 01786 870293

Highly Recommended by Nef-Stedi!

## 21. Dunster Castle

*Historic Buildings and Monuments, Parks Gardens and Woodlands*

National Trust Property with subtropical terraced garden

Dunster, TA24 6SL, Somerset, England



**Highly Recommended by Nef-Stedi!**

## 22. Lynton and Barnstaple Railway

*Tours and Trips, Cafes Coffee Shops and Tearooms, Railways*



A restored narrow gauge steam railway in the Exmoor National Park area of North Devon. One mile of the original 19 miles has so far been re-opened.

Martinhoe Cross, Parracombe, EX31 4RA, Devon, England

**Phone:** 01598 763487

**Highly Recommended by Nef-Stedi!**

## 23. h2outdoor Adventure Activities North Devon

*Tours and Trips, Cycling and Mountain Bikes, Horse Riding and Pony Trekking, Sailing and Watersports, Walking and Climbing, Guided Walks, Guided Tours and Day Trips*



A fantastic selection of adventure activities in North Devon. Sea kayaking, canoeing, surfing, coasteering, mountain biking, pony trekking & high ropes are just some of the activities we offer. Suitable for children, groups, stag/hen & corporate

Woolacombe, EX34 7BZ, Devon, England

**Highly Recommended by Nef-Stedi!**

## 24. Horse riding holidays in North Devon Croyde

*Childrens Attractions, Horse Riding and Pony Trekking*



Roylands riding stables cater for all abilities and offer horse riding holidays.

Croyde, EX33, Devon, England

**Highly Recommended by Nef-Stedi!**

## 25. Lundy Island

*Beaches, Tours and Trips, Childrens Attractions, Pubs and Bars, Walking and Climbing*



Lundy Island and Nature Reserve

Bideford, EX39 2LY, Devon, England

 Highly Recommended by Nef-Stedi!

---

### 26. Saunton Sands Beach

*Beaches, Childrens Attractions, Sailing and Watersports*



3 miles long sandy beach, ideal for families and popular with surfers

Saunton, EX33, Devon, England

 Highly Recommended by Nef-Stedi!

---


### 27. Exmoor National Park

*Parks Gardens and Woodlands, Horse Riding and Pony Trekking, Shooting and Fishing, Walking and Climbing*



Beautiful national park spanning Somerset and Devon

Dulverton, TA22 9HL, Somerset, England

 Highly Recommended by Nef-Stedi!

---

### 28. Quince Honey Farm

*Visitor Centres and Museums, Childrens Attractions, Zoos Farms and Wildlife Parks, Shops*



World famous honey farm - the largest in the country

South Molton, EX36 3AZ, Devon, England

 Highly Recommended by Nef-Stedi!

---

### 29. Westward Ho! Beach

*Beaches, Childrens Attractions*



Over 2 miles of sandy beach in North Devon

Westward Ho, TQ1 , Devon, England

 Highly Recommended by Nef-Stedi!

---

### 30. The Milky Way Adventure Park

*Visitor Centres and Museums, Childrens Attractions, Indoor and Outdoor Play Areas*





North Devon's largest undercover family attraction.

Bideford, EX39 5RY, Devon, England

 **Highly Recommended by Nef-Stedi!**


### 31. Tintagel and Tintagel Castle

*Beaches, Historic Buildings and Monuments, Lochs Lakes and Waterfalls, Parks Gardens and Woodlands, Visitor Centres and Museums, Childrens Attractions, Cafes Coffee Shops and Tearooms, Pubs and Bars, Shops*



Breathtaking ruined castle on the Cornish Coast - mythical home of King Arthur

Tintagel, PL34, Cornwall, England

 **Highly Recommended by Nef-Stedi!**

### 32. Babbacombe Model Village

*Childrens Attractions*



Thousands of miniature buildings, people and vehicles capture the essence of England's past, present and future

Babbacombe, TQ1 3LA, Devon, England

 **Highly Recommended by Nef-Stedi!**

### 33. Lanhydrock

*Historic Buildings and Monuments, Parks Gardens and Woodlands, Visitor Centres and Museums, Childrens Attractions, Indoor and Outdoor Play Areas, Cafes Coffee Shops and Tearooms, Restaurants*



Magnificent late Victorian country house with extensive servants' quarters, gardens and wooded estate

Bodmin, PL30 5AD, Cornwall, England

 **Highly Recommended by Nef-Stedi!**

### 34. Blackpool Sands Beach Devon

*Beaches, Childrens Attractions, Cafes Coffee Shops and Tearooms, Shops, Sailing and Watersports*



Award-winning family beach with turquoise blue sea giving it an almost Mediterranean feel.

Dartmouth, TQ6 0RG, Devon, England

 Highly Recommended by Nef-Stedi!

---

### 35. Slapton Sands and Torcross

*Beaches, Childrens Attractions, Sailing and Watersports*



Fantastic pebble beach in Devon

Slapton, TQ6, Devon, England

 Highly Recommended by Nef-Stedi!

---


### 36. Fistral Beach

*Beaches, Sailing and Watersports*



World Famous surfing Beach in Newquay, Cornwall

Newquay, Cornwall, Cornwall, England

 Highly Recommended by Nef-Stedi!

---

### 37. Newquay Zoo

*Zoos Farms and Wildlife Parks*



One of the nations's best zoos, home of many of the world's endangered species.

Newquay, TR7 2LZ, Cornwall, England

 Highly Recommended by Nef-Stedi!

---

### 38. Lost Gardens of Heligan

*Parks Gardens and Woodlands*



One of the most popular botanical gardens in the UK

St Austell, PL26 6EN, Cornwall, England

*"A great day out for everyone. Highly recommended by us as a family. Plenty of space for kids to run around. Beautiful gardens and walks."*

 Highly Recommended by Nef-Stedi!

---

**39. Loch Venachar***Lochs Lakes and Waterfalls*

Loch Venachar, The Trossachs

Callander, FK8 3EN, Stirlingshire,  
Scotland

*"There is a great walk down the southside of the Loch leading past the sailing club and if you branch right you can reach the Byre Inn."*

By Nef-Stedi

**40. Eat on the Green***Restaurants*

Eat on the Green is an award winning restaurant at Udney Green

Udney Green, AB41 7RS, Aberdeenshire,  
Scotland**41. Lochter Activity Centre***Fitness and Leisure Centres, Shooting and Fishing, Walking and Climbing*

Outdoor activity centre offering a range of activities

Old Meldrum Inverurie, AB51 0DZ,  
Aberdeenshire, Scotland**42. Pitmedden Garden***Parks Gardens and Woodlands*

Pitmedden Garden is owned by the National Trust for Scotland. In the summer months it features over 40,000 plants bursting with colour.

Pitmedden, AB41 7PD, Aberdeenshire,  
Scotland**43. Castle Fraser***Historic Buildings and Monuments, Parks Gardens and Woodlands*

A grand baronial castle dating from the 16th century.

Inverurie, AB51 7LD, Aberdeenshire,  
Scotland**44. Fyvie Castle***Historic Buildings and Monuments, Parks Gardens and Woodlands*



An Historic Castle, Fyvie Castle was built over 800 years ago in Aberdeenshire, Scotland

Turriff, AB53 8JS, Aberdeenshire, Scotland

#### 45. Bead Crazy Aberdeen

*Art Gallery, Childrens Attractions, Shops*



Bead Crazy is a fun, city centre located specialist retailer of beads and jewellery making supplies. We also run parties and workshops for all ages.

Aberdeen, AB25 1BQ, Aberdeenshire, Scotland

#### 46. Fjord Inn

*Pubs and Bars*



Pub / Restaurant in Inverurie Aberdeenshire. relaxed and friendly environment, offering a menu made with fresh local produce.

Inverurie, AB51 8YS, Aberdeenshire, Scotland

#### 47. Crathes Castle Garden and Estate

*Historic Buildings and Monuments, Parks Gardens and Woodlands, Visitor Centres and Museums*



One of the most beautiful and best preserved castles in Scotland

Banchory, AB31 5QJ, Aberdeenshire, Scotland

#### 48. Aden Country Park Mintlaw Aberdeenshire

*Festivals and Events, Lochs Lakes and Waterfalls, Nature Reserve, Parks Gardens and Woodlands, Tours and Trips, Visitor Centres and Museums, Childrens Attractions, Indoor and Outdoor Play Areas, Zoos Farms and Wildlife Parks, Cafes Coffee Shops and Tearooms, Restaurants, Shops, Horse Riding and Pony Trekking, Walking and Climbing*



Aden Country Park in Mintlaw, Aberdeenshire, is a 230 acre country park in the heart of Buchan.

Peterhead, AB42 5FQ, Aberdeenshire, Scotland



#### More Information

For more information, you can find us under ref.nr. 82547 on LovetoEscape.com

[LovetoEscape.com/holiday-cottages/82547/nef-stedi.htm](https://LovetoEscape.com/holiday-cottages/82547/nef-stedi.htm)